

# RISK ASSESSMENT

|                       |   |                          |                             |
|-----------------------|---|--------------------------|-----------------------------|
| <b>Project Title:</b> | Claude Fenton(Plant Hire) Ltd t/a Southern Hoist Services     | <b>Risk Assess. No.:</b> | <b>2303</b>                 |
| <b>Task/Activity:</b> | Infection control in the workplace<br>Covid - 19 -Coronavirus | <b>Project No.:</b>      |                             |
|                       |   | <b>Date Prepared:</b>    | 23 <sup>rd</sup> March 2020 |

| HAZARDS                                |   | Likelihood |            |        | Severity     |          |         |          | Risk Score |                       |
|--|---|------------|------------|--------|--------------|----------|---------|----------|------------|-----------------------|
| Ref.                                   | Key hazards associated with the above task/activity.    | Probable   | Occasional | Remote | Catastrophic | Critical | Serious | Marginal | Negligible | Likelihood x Severity |
| <b>Pre-control assessment of risk:</b> |   | 3          | 2          | 1      | 5            | 4        | 3       | 2        | 1          |                       |
| 1                                      | Contracting Covid – 19 – Coronavirus                    | x          |            |        |              |          | x       |          |            | 9                     |
| 2                                      | Spreading Covid – 19 – Coronavirus                      | x          |            |        |              | x        |         |          |            | 12                    |
| 3                                      | Spreading Covid – 19 – Coronavirus to vulnerable groups | x          |            |        |              | x        |         |          |            | 12                    |

|                                |                      |                        |                     |
|--------------------------------|----------------------|------------------------|---------------------|
| <b>Risk Assessment Scores:</b> | <b>10+ High Risk</b> | <b>4-9 Medium Risk</b> | <b>1-3 Low Risk</b> |
|--------------------------------|----------------------|------------------------|---------------------|

| PERSONS AFFECTED |   |                   |   |               |   | PPE REQUIREMENTS   |   |                 |  |                        |  |
|------------------|---|-------------------|---|---------------|---|--------------------|---|-----------------|--|------------------------|--|
| Operatives       | x | Members of Public | x | Site Visitors | x | Harness & Lanyard  |   | Hi-Viz Clothing |  | Respiratory Protection |  |
| Other Workers    | x | Managers          | x | Young Persons | x | Hearing Protection |   | Eye Protection  |  | Head Protection        |  |
| Supervisor       | x | Over 70s          | x | Others        | x | Gloves             | x | Boots           |  | Coveralls              |  |

## ADDITIONAL CONTROL MEASURES

| Information/Instruction/Training   | Managerial Controls   |
|--|---|
| <ul style="list-style-type: none"> <li>➤ The workforce to be briefed on the company's infection control policy for COVID- 19 and general good hygiene practices such as regular hand washing with soap and water for at least 20 seconds.</li> <li>➤ Review/update information on the company infection control policy as required.</li> <li>➤ The workforce to be briefed on the work areas they are being sent to, they will be advised of any confirmed or suspected cases of the COVID-19 within that workplace any additional controls required to prevent contracting or spreading the virus.</li> </ul> | <ul style="list-style-type: none"> <li>➤ Company to provide infection control policy for the workplace to cover Pandemic outbreak.</li> <li>➤ Company to provide at each place of work good welfare facilities that include soap and water to ensure compliance with Schedule 2 of the Construction Design and Management Regulations 2015.</li> <li>➤ Company to provide additional hand sanitisation equipment or stations at each work site under their control.</li> <li>➤ During any pandemic outbreak the company will limit non-essential business travel and where possible will arrange for staff to work from home.</li> <li>➤ The company require any employee who has the symptoms of this virus to self -isolate and will require them to be screened by a medical professional before they will be permitted to return to work.</li> <li>➤ The client is to inform the company of any known vulnerable groups in areas they will be required to work in, and a specific assessment will be carried out to identify any additional controls to be observed.</li> </ul> |

| Physical Controls   | Procedural Controls  |
|---|--|
| <ul style="list-style-type: none"> <li>➤ Employees are required to follow the company policy on infection control, which has been produced from the latest information being provided by the Government to slow the spread of the COVID – 19 virus.</li> <li>➤ Avoid physical contact with others i.e. don't shake</li> </ul> | <ul style="list-style-type: none"> <li>➤ Carryout regular cleaning and disinfecting of frequently touched items, those carrying out these general cleaning tasks will be required to wear disposable gloves and follow the required through hand cleaning when removing the protection.</li> <li>➤ Self- isolation. If you develop a persistent cough, sneeze</li> </ul> |

| Physical Controls  | Procedural Controls   |
|--|---|
| <p>hands or hug as a greeting. If you can keep a distance of 2m between you and others.</p> <ul style="list-style-type: none"> <li>➤ If you do cough or sneeze, cover your mouth or nose with a tissue or into your sleeve 'Not your hand.' Remember Catch it, Bin it, Kill it.</li> <li>➤ Regular and thorough hand washing (at least 20 seconds with soap and water) is a key control against the spread of this virus (COVID- 19) and other flu type viruses – Use hand sanitizer gel if soap and water is not readily available. <b>See the hand washing guidance posters.</b></li> <li>➤ Avoid touching your eyes, nose or mouth unless you have thoroughly washed your hands and again repeat the hand washing process when finished.</li> <li>➤ Limit non-essential personal travel arrangements avoid large gatherings where the risk of close contact with others will be more difficult to control.</li> </ul> | <p>or have any difficulty in breathing or develop a fever (high temperature), you must not come to work, you must self-isolate and seek medical advice call NHS 111 if your symptoms do not improve. Report your self- isolation to the company at the earliest opportunity.</p> <ul style="list-style-type: none"> <li>➤ If you have a weakened immune system, are over 70 years old or have a long term medical condition you are at greater risk from this virus (COVID -19)– You will be required to limit your social contact or self- isolate for your own safety, even if you do not have symptoms, ensure the company is made aware of your situation.</li> <li>➤ Review work schedules and limit non-essential business travel.</li> </ul> |

| PPE/RPE – Minimum standards required                                  | Comments   |
|---|--|
| <ul style="list-style-type: none"> <li>➤ Disposable gloves</li> </ul> | <ul style="list-style-type: none"> <li>➤ This assessment is to be reviewed regularly during the Pandemic outbreak to ensure it reflects the most current Government guidance.</li> </ul> |

| HAZARDS |   | Likelihood |            |        | Severity     |          |         |          |            | Risk Score            |
|---------|---|------------|------------|--------|--------------|----------|---------|----------|------------|-----------------------|
| Ref.    | Key hazards associated with the above task/activity.    | Probable   | Occasional | Remote | Catastrophic | Critical | Serious | Marginal | Negligible | Likelihood x Severity |
|         | Post assessment (With controls applied):                | 3          | 2          | 1      | 5            | 4        | 3       | 2        | 1          |                       |
| 1       | Contracting Covid – 19 – Coronavirus                    |            | x          |        |              |          | x       |          |            | 6                     |
| 2       | Spreading Covid – 19 – Coronavirus                      |            | x          |        |              | x        |         |          |            | 8                     |
| 3       | Spreading Covid – 19 – Coronavirus to vulnerable groups |            | x          |        |              | x        |         |          |            | 8                     |

|                         |               |                 |              |
|-------------------------|---------------|-----------------|--------------|
| Risk Assessment Scores: | 10+ High Risk | 4-9 Medium Risk | 1-3 Low Risk |
|-------------------------|---------------|-----------------|--------------|

|  |   |
|--|---|
| <p><b>Residual Risk Rating</b><br/>With above control measures in place</p> <p style="font-size: 2em; font-weight: bold; margin-top: 20px;">MEDIUM</p> | <p>Assessment Prepared by:</p> <p>Name:</p> <p>Signature:</p> <p>Review Date:</p> |
|--|---|

This risk assessment should be read in conjunction with all relevant method statements, safe systems of work, policy statements, COSHH assessments and supported by a 'Point of Work' Risk Assessment completed by the site supervisor.

# Hand-washing technique with soap and water



1 Wet hands with water



2 Apply enough soap to cover all hand surfaces



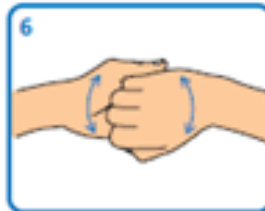
3 Rub hands palm to palm



4 Rub back of each hand with palm of other hand with fingers interlaced



5 Rub palm to palm with fingers interlaced



6 Rub with back of fingers to opposing palms with fingers interlocked



7 Rub each thumb clasped in opposite hand using a rotational movement



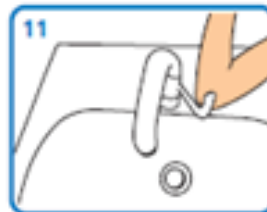
8 Rub tips of fingers in opposite palm in a circular motion



9 Rub each wrist with opposite hand



10 Rinse hands with water



11 Use elbow to turn off tap



12 Dry thoroughly with a single-use towel



13 Hand washing should take 15-30 seconds